

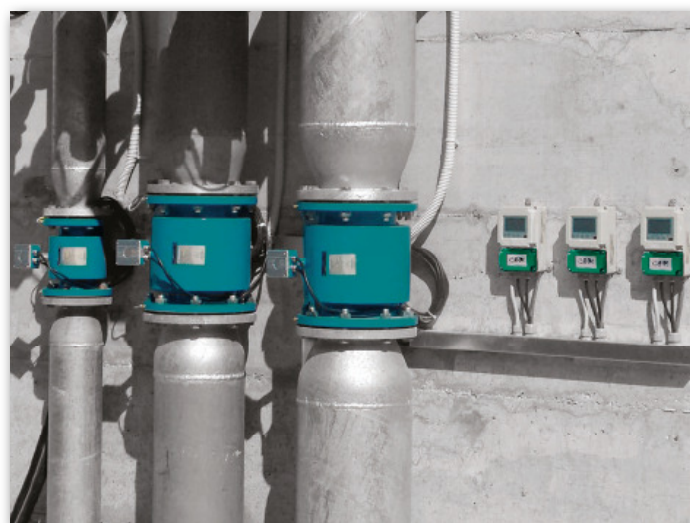
Pmag

electromagnetic induction flow measurement



Pmag flowmeters are particularly suitable for all types of wastewater measurements. A various types of lining material are available to suit chemically aggressive liquids or with suspended solids. A salient feature of the soft rubber lining is the resistance to abrasion due to water with suspended solids.

- Compact digital system, for conductive liquids ($>5\mu\text{S}/\text{cm}$), even with a limited content of suspended solids
- Measurement range: from $<0,1\text{m}^3/\text{h}$ to $>28000\text{m}^3/\text{h}$
- Typical measurement accuracy: $\pm 0.5\%$ ($\pm 0.2\%$ optional)
- Power supply 85÷265Vac, 24Vdc, 12Vdc



process control and measurement

FEATURES

- Sensor dimension range: DN10 ÷ DN1000
- Measure range: <math><0,1\text{m}^3/\text{h}</math> ÷ $>28000\text{m}^3/\text{h}$
- Sensor material: SS321
- Lining material:
PTFE DN10 ÷ DN500
RUBBER DN65 ÷ DN1000
- Housing material: epoxy painting aluminium
- Electrodes material
SS316L - Hastelloy C - Titanium - Tantalum - Platinum
- Remote version operating temperature:
RUBBER -10 ÷ +80°C; PTFE -40 ÷ +150°C
- Compact version operating temperature:
RUBBER -10 ÷ +80°C; PTFE -40 ÷ +108°C
- Fluid conductivity: >5µS/cm
- Flow rate range: Pmag able to process signals from fluid with flow rates of up to 10m/s in both directions (bidirectional meter)
- Accuracy: ±0,5% standard; ±0,2% optional
- Repeatability: ±0,1%
- Analog output: 4÷20mA; max. load 750Ω
- Communication protocol (opt.): Modbus; Hart
- Digital output: 0,1÷5000Hz
- Pulse output: 24Vdc pull up open collector or galvanically isolated open collector (opt.)
- Power supply: 85÷265Vac, 24Vdc, 12Vdc
- Consumption: 6W, max 8W
- Compact version protection : IP66, converter provided with transparent protection cover
- Remote version protection:
sensor IP67, IP68 (optional)
converter IP66 provided with transparent protection cover

PRODUCT CODES

Version	
E	Remote - accuracy 0,2% - standard cable length 5m (over 5m contact our office)
F	Remote - accuracy 0,5% - standard cable length 5m (over 5m contact our office)
W	Compact - accuracy 0,2% - max temperature of the fluid 80°C
Y	Compact - accuracy 0,5% - max temperature of the fluid 80°C
DN flange / Max. pressure / Lining	
	Available from DN 10 to DN 1000. More info on our web site
Process connection	
B	DIN (UNI 1092-1) flange
D	ANSI flange (price on request)
Z	Special
Electrodes material	
1	SS316L Stainless steel
3	Hastelloy C
4	Titanium
5	Tantalum
6	Platinum
Power supply	
A	85÷265Vac
B	24Vdc
D	12Vdc
Z	Special
Accessories	
0	None
1	321SS or Hastelloy C grounding rings for plastic pipe installation (price on request)
2	Protective rings against inner lining abrasion (price on request)
3	3rd electrode (price on request)
Output	
A	4÷20mA + pulse output
C	4÷20mA + pulse output + HART
E	4÷20mA + pulse output + MODBUS RTU
F	4÷20mA + galvanically separated pulse output
H	4÷20mA + galvanically separated pulse output + HART
L	4÷20mA + galvanically separated pulse output + MODBUS RTU
Sensor pipe protection degree	
1	IP67
2	IP68 (only for remote version)

