



# QUALITROL® T/GUARD 408 and 408XT

## Fiber Optic Temperature Monitoring System

### Real time direct winding optical temperature monitoring system

- Provides essential data during transformer heat run
- Maximizes cooling efficiency with accurate hot spot temperature measurement
- Optimizes loading dynamically without compromising transformer life
- Complements predictive hot-spot algorithm simulations
- Compatible with Qualitrol Q-Link™ for Apple® iPhone®, OptiLink and OptiLink-II
- Available with 4, 6, 8, 10, 12, 14 or 16 channels

#### Product Summary

**Description:** Rugged and full featured multi-channel fiber optic real-time hot spot monitoring system for dry-type and oil-filled transformers

**Application:** Local monitoring of oil-filled transformer and load tap changer with Qualitrol T2 temperature probes



Fibers by 

**QUALITROL®**  
Defining Reliability



- The Qualitrol® T/Guard 408 is a multichannel fiber optic temperature monitoring system for power transformer hot spot measurements. It has been developed with long-term performance and stability in mind. This fiber-optic temperature monitoring system for power transformers offers accuracy, toughness and long-term resistance to failure.
- Coupled with the 408 system, the Qualitrol® T2 fiber-optic temperature probes provide accurate and direct temperature monitoring of transformer windings. This solution provides a realistic, real-time view of winding conditions that is quicker and more accurate than top oil thermocouple measurements, and greatly complements indirect measurements based on thermal models.
- Qualitrol® 408 gives the exact temperature of optical probes in 250 milliseconds per channel. Peak load or emergency overloads are thus detected almost instantaneously.
- The 408 system is specifically designed to meet power transformer industry requirements: extended intervals between servicing, low maintenance, rugged components and the ability to withstand the harshest conditions. All components have been specifically selected for long term performance, including the light source that has an MTBF far superior (>300 years) to the expected life of the transformer. Moreover, compared to other technologies available on the market, such as fluorescent decay, our sensor, based on solid-state semiconductor, does not fade or drift over time, allowing a constant and absolute temperature measurement of your transformer windings over the lifespan of the equipment.
- Qualitrol fiber-optic probes are based on the proven GaAs technology and made only with dielectric materials. They are designed to withstand initial manufacturing conditions, including kerosene desorption and heat runs, as well as long term oil immersion, temperature cycles and vibrations.
- The 408 system is available with 4, 6, 8, 10, 12, 14 or 16 optical channels. There are a total of eight four-digit high power LED display, one for each channel for systems that have up to 8 channels, or intelligently multiplexed for systems that have more than 8 channels. The large display size allows easy viewing from a distance.
- System's power consumption is 25 watts with all relays enabled. It accepts a broad range of AC and DC inputs
- The 408 can be mounted directly on the cabinet swing doors using the four bolts anchors, or bolted directly on a back mounting plate inside the cabinet.
- The 408 comes standard with a built-in 2GB data logging memory that allows utilities and transformer operators to record temperature data points and alarm status information directly into their 408 temperature monitoring system, without the need for permanent connection to a remote acquisition system. This memory represents more than thirty years of data logging at every minute for a transformer configured with eight temperature probes. The information can be accessed through the serial port (408) or any web browser (408XT). Moreover, data points are saved with a time stamp emanating from the internal real-time clock.
- The powerful web based software includes some sophisticated tools, such as **TransLife™**, which will estimate your transformer insulation remaining life based on real hot spot temperature data; it will report the loss of life rate, life consumed, remaining asset life and hours of operation. Historical temperature information can be displayed in graphical form (408XT only).
- The 408 T/Guard system is easy to interface to an existing marshalling or substation system through its 4-20 mA analog outputs or through its RS-485 serial port using Modbus, DNP3 or IEC 80670-5-101 communication interfaces. The 408XT version is Ethernet / Smart Grid ready and incorporates, among others, IEC-61850 protocol. Information collected by the system can also be accessed through any web browser over TCP/IP.
- With its small footprint, the 408 is a space-efficient and versatile instrument. All connections are made through detachable plugs for an easy and seamless installation or service. Both 8 and 16 channel versions have the same footprint.
- The 408 system has eight built-in Form-C (SPDT) industrial relays with galvanic isolation that can also be set up as Form-A or Form-B relays by the user. Each relay has a fail safe mode whereby relays can be activated in case of a system problem. Furthermore, a ninth relay is available as a dedicated system fault relay.
- System's configuration is made through the industrial grade front panel keypad, serial terminal, OptiLink-II software (408) or the built-in web-based server (408XT).
- Qualitrol 408XT is compatible with Qualitrol Q-Link for Apple® iPhone® application allowing remote access to essential information on transformer status and trends from any location. The application is simply a viewer, and does not allow any modification of the instrument settings nor its information.

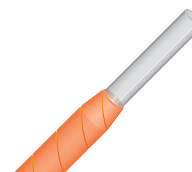
|                      | 408 | 408XT |
|----------------------|-----|-------|
| Large LED display    | ✓   | ✓     |
| Form C Relays (8)    | ✓   | ✓     |
| 4-20 mA Outputs      | ✓   | ✓     |
| RS-485 Port          | ✓   | ✓     |
| AC or DC input       | ✓   | ✓     |
| 2GB datalogging      | ✓   | ✓     |
| RJ-45 port           |     | ✓     |
| Web server           |     | ✓     |
| Smart Grid protocols |     | ✓     |
| iPhone application   |     | ✓     |



## Accessories

### T2 Temperature probe

This temperature probe is designed to withstand initial manufacturing conditions, including kerosene desorption and heat runs, as well as long term oil immersion and vibration. The T2 probe consists of a 300-microns OD solid-state crystal and optical fiber sheathed with an oil permeable protective PTFE Teflon tube. Only chemical resistant dielectric materials are used for these temperature probes. The temperature range is -80 °C to +250 °C. The probes can be embedded in a standard spacer or attached directly onto any other location inside power transformer copper windings. All T2 optical temperature probes are available in custom length from 1 to 25 meters.



### Tank wall optical feedthrough

Specifically designed for transformer tank walls, this feedthrough has a simple design that provides both toughness and long-term leak-free operation. It is made from 316 stainless steel and relies on proven glass-to-metal bonding techniques. The feedthrough uses 1/4" NPT ANSI threads and can be installed directly into the tank wall or on a tank wall mounting plate. No O-rings are used.



### External fiber-optic extension cables

These cables are made with a polyurethane jacket reinforced with Kevlar threads and are designed to withstand the harshest conditions. External fiber-optic extension cables come in standard 5 or 10 meter lengths. Custom lengths are also available from 1 meter to 1 kilometer. The temperature range is -50 °C to +85 °C. Cables should be routed into protective conduits or tracks.



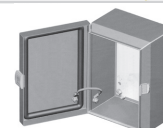
### Tank wall mounting plate & JBox2

Up to 24 feedthroughs can be mounted on a tank wall mounting plate. The plate is made with carbon or stainless steel 316. Tank wall mounting plates can be customized in size or material according to customer specifications, with larger plates allowing more feedthroughs. The mounting plate comes with the JBox2™ protective enclosure.



### NEMA-4 Enclosure

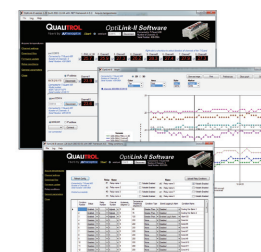
The T/Guard system can be mounted in a NEMA-4 enclosure that houses and protects the instrument for long-term exterior use. All fiber-optic extension cables are connected inside this enclosure. The NEMA-4 enclosure includes a clear polycarbonate window-door and is compliant with NEMA/EEMAC Type 4 and 12 standards.



### OptiLink-II software

OptiLink-II is a user-friendly software that allows to interface your 408 to a Windows PC, via its serial port. It is the ideal complement to your 408 without Ethernet. It adds the following capabilities to your system:

- Supports up to 4 T/Guards (different models) and up to 64 channels (via the serial port or Ethernet link)
  - Does data logging, directly to an Excel spreadsheet
  - Displays and graphs (2D and 3D) on your PC screen up to 64 channels
  - Allows to configure your 408 without remembering serial commands
  - The next best feature after a web server
- \* Can download and upload files, such as a firmware upgrade, temperature log files, the status file, configuration files, etc.



| TECHNICAL SPECIFICATIONS |                               | T/GUARD 408  | T/GUARD 408XT   |  |
|--------------------------|-------------------------------|--|---|--|
| System specifications    | Number of channel             | 4, 6, 8, 10, 12, 14 or 16 optical channels   |   |  |
|                          | Resolution                    | 0.1 °C (0.1 °F)  |   |  |
|                          | Accuracy                      | ±1.0 °C (1.6 °F)   |   |  |
|                          | Calibration                   | No system recalibration needed over lifespan to remain within specifications   |   |  |
|                          | System sampling rate          | 250 ms switching rate between each channel; Variable if set to "WTune" feature Rate can be adjusted by user from 250 milliseconds to one point per week  |   |  |
|                          | Data logging rate             | Data logging rate can be adjusted by user from one point every second to one point per hour period.  |   |  |
|                          | Built-in calculations         | Min/Max, Global values   |   |  |
|                          | Upgradability -Firmware       | Flash upgradeable through serial port  | Flash upgradeable through serial port or Ethernet/Web browser |  |
|                          | Display                       | One four-digit block per channel. 7-segment (LED). Multiplexed display for channels 9 to 16  |   |  |
|                          | Units                         | User selectable, Metric or Imperial, LED indicators on front panel   |   |  |
|                          | Data logging memory           | 2 GB on-board datalogging memory. Logging feature available for probes, alarms, system status, relays functions in an ASCII file (equivalent to 30 years of continuous logging on 8 channels at every minute). Option: 4GB |   |  |
|                          | Temperature measurement range | -80 to 300 °C (-112 to 572 °F)   |   |  |

| TECHNICAL SPECIFICATIONS          |   | T/GUARD 408  | T/GUARD 408XT   |
|-----------------------------------|---|--|---|
| <b>Communication and I/O</b>      | <b>Operating Mode</b>   | System front panel keypad, ASCII commands over RS-485 (HyperTerminal or OptiLink-II)   | System front panel keypad, ASCII commands over RS-485 (HyperTerminal or OptiLink-II), Ethernet (web-based configuration)  |
|                                   | <b>Communication (hardware)</b>   | - Isolated RS-485 serial port on screw terminal  | - Isolated RS-485 serial port<br>- Ethernet (100BASE-TX)  |
|                                   | <b>Communication protocols</b>  | SERIAL:<br>- ASCII (terminal console and OptiLink)<br>- Modbus RTU (2 or 4-wire config)<br>- DNP 3.0 (optional)<br>- IEC 60870-5-101 (optional)  | SERIAL:<br>- ASCII (terminal console and OptiLink)<br>- Modbus RTU (2 or 4-wire config)<br>- DNP 3.0 (optional)<br>- IEC 60870-5-101 (optional)<br><br>ETHERNET:<br>- HTTP (Web based)<br>- Modbus over Ethernet<br>- DNP 3.0 (optional)<br>- IEC 60870-5-104 (optional)<br>- IEC 61850 (optional)<br>- Qualitrol Q-Link for Apple® iPhone® (viewer only) |
|                                   | <b>Relays</b>   | 8 built-in relay drivers for transformer cooling control, enclosure cooling/heating, trips, alarms, etc. ; Form-C (SPDT) relays (5A/240VAC or 0.3A/240VDC or 8A/24VDC max @ 50 °C), Programmable fail safe mode. 9th built-in relay for dedicated system fault |   |
|                                   | <b>Relay drive</b>  | Direct with system's built-in calculation algorithms   |   |
|                                   | <b>Analog Outputs</b>   | 4-20 mA; Detachable header connector blocks, 5.08 mm pitch. Up to 16 analog outputs (one per channel)  |   |
| <b>Mechanical and Environment</b> | <b>Operating temperature</b>  | -40 to +72 °C, 5-90% humidity, non-condensing  |   |
|                                   | <b>Storage temperature</b>  | -40 to +85 °C, 5-90% humidity, non-condensing  |   |
|                                   | <b>PCB env. protection</b>  | MIL-I-46058C (IPC-CC-830) Type SR silicone conformal coating   |   |
|                                   | <b>Light source MTBF</b>  | Light source lifespan and optimal system performance superior to 300 years of continuous use. No degradation of total system accuracy over light source lifespan.  |   |
|                                   | <b>Form factor</b>  | Mounting details: Enclosure must be protected from water and dust. It can be mounted on a back panel or from the front, using M6 or M8 bolts   |   |
|                                   | <b>Front membrane</b>   | UV stabilized polyester with 5 million push MTBF keys  |   |
|                                   | <b>Connectors</b>   | Optical: Standard ST connector<br>Analog, relays, serial and power-in: 5.08 mm pitch connectors<br>socket for headers with screw terminals   | Optical: Standard ST connector<br>Analog, relays, serial and power-in: 5.08 mm pitch connectors<br>socket for headers with screw terminals<br>Ethernet: Isolated RJ-45  |
|                                   | <b>Dimensions/weight</b>  | Width: 280 mm ; Height: 110 mm; Depth: 70 mm (1-8 ch) or 95 mm (9-16 ch)<br>Mounting holes: 4x M8 from front or 4x M6 if bolted from back of system<br>Mounting hole specs: 255 mm x 85 mm;<br>Weight: 2.5 kg  |   |
| <b>Compliance</b>                 | <b>Conducted/Radiated Emissions, surge withstand and environmental</b>  | IEC 61000-4-2 ESD  | IEC 61000-4-11 Voltage dip  |
|                                   |   | IEC 61000-4-3 Radiated RFI   | IEEE C37.90 Dielectric strength (high pot)  |
| <b>Power</b>                      | <b>Power requirements</b>   | 85 - 264 Vac or 110 - 370 Vdc, 47- 63 Hz Frequency range   |   |
|                                   | <b>Power consumption</b>  | 25 Watts   |   |
| <b>Other</b>                      | <b>Probe compatibility</b>  | Compatible with all Qualitrol / Neoptix GaAs fiber optic temperature probes and transducers  |   |
|                                   | <b>Probe signal optimization</b>  | System has built-in Neoptix WTune™ probe optimization algorithm  |   |
|                                   | <b>Warranty</b>   | 5 years Limited International warranty; Extended warranty available  |   |
| <b>Ordering Codes</b>             | <p>Serial com p rotocols</p> <p>0 = ASCII and Modbus (standard)</p> <p>1 = ENHANCED: Includes Modbus, DNP 3.0 and IEC60870-5-10 1</p> <p>9 = Other (specify)</p>  |  | <p>Serial com p rotocols</p> <p>0 = ASCII and Modbus (standard)</p> <p>1 = ENHANCED: Includes DNP 3.0 and IEC 60870-5-10 1</p> <p>9 = Other (specify)</p>   |
|                                   | <p>408 - [ ] - SP [ ] - M [ ]</p> <p>04 = 4 channels   10 = 10 channels</p> <p>06 = 6 channels   12 = 12 channels</p> <p>08 = 8 channels   14 = 14 channels</p> <p>                    16 = 16 channels</p> |  | <p>408XT - [ ] - SP [ ] - EP [ ] - M [ ]</p> <p>04 = 4 channels   10 = 10 channels</p> <p>06 = 6 channels   12 = 12 channels</p> <p>08 = 8 channels   14 = 14 channels</p> <p>                    16 = 16 channels</p>  |
|                                   | <b>Options for the 408</b>  | RS-485 to USB bridge - Neoptix part number NXP-341   |   |



© 2013 Qualitrol Company LLC. All rights reserved. Information subject to change without notice. Qualitrol Company LLC is an ISO 9001 system certified company. AP-M09-20L-05E-1408-408 Apple, iPad, iPhone, iPod touch, and iTunes are trademarks of Apple Inc., registered in the U.S. and other countries. App Store is a service mark of Apple Inc.