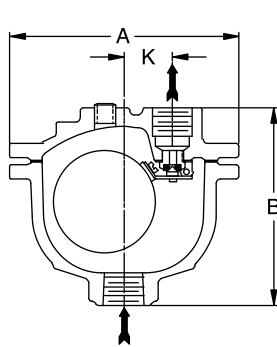
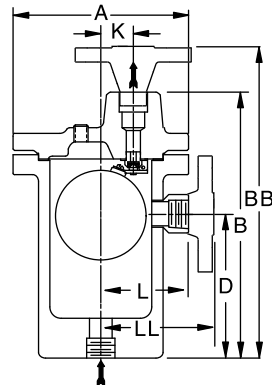


Fixed Pivot Ball Float Air/Gas Vents

For Pressures to 41 bar or Specific Gravity Down to 0,83



Model 21-AR



Model 21-312 AR/VAR



21-AR – A small, high-quality economical air vent. It employs a single lever with a fixed pivot and viton seat, ensuring a tight shut-off.

21-312 AR/VAR – Forged steel version of the Model 21 with a larger float and higher leverage. Available with screwed, socketweld or flanged connections.

Model No.	Cast Iron	Forged Steel
	21-AR	21-312 AR/VAR
Pipe Connections	mm	mm
	15 – 20	15 – 20
“A”	157	171
“B”	133	260
“BB” (PN100*)	N/A	300 – 305
“D”	–	141
“K”	33	32
“L”	–	84
“LL” (PN100*)	N/A	124 – 129
Weight in kg (screwed & SW)	4	14
Weight in kg (flanged PN100*)	N/A	15,8 – 17,8
Maximum Allowable Pressure (Vessel Design)	17 bar @ 232°C**	41 bar @ 38°C 34 bar @ 399°C

* Other flange sizes, ratings and face-to-face dimensions are available on request.

** Viton valve seat insert limited to 204°C.

All models comply with the article 4.3 of the PED (2014/68/UE).

Minimum Specific Gravity	0,49	0,84
Float weight in grams	64	118
Orifice (in)	Maximum Operating Pressure in bar	
7/32"	1,2	–
3/16"	1,6	–
5/32"	2,3	–
9/64"	2,8	–
1/8"	3,6	–
3/32"	6,4	–
5/64"	9,2	–
1/16"	14,0	–
1/16"	–	17,0

Model	Minimum Specific Gravity	0,83
	Float weight in grams	143
21-312 AR	Orifice (in)	Maximum Operating Pressure in bar
		1/4"
	7/32"	1,9
	3/16"	2,7
	5/32"	3,8
9/64"	4,7	
32-312 VAR	Orifice (in)	Maximum Operating Pressure in bar
		1/8"
	3/32"	21,0
	5/64"	31,0
1/16"	41,0	

Model No.	Valve	Seat	Leverage System	Float	Body & Cap	Gasket	Bolting
21-AR	Stainless Steel	Stainless Steel with *Viton Insert	Stainless Steel	Stainless Steel	ASTM A48 Class 30 Cast Iron	Non-Asbestos	Bolts SAE Gr. 2 Nuts ASTM A563 Gr. A
21-312 AR 21-312 VAR					ASTM A105 Forged Steel		Bolts and Nuts ASTM B633 Type 1

Note: Above vents available in T-316 SS bodies and caps and all SS internals. Aluminum body and cap available for Model 21-AR only.

* Other seat insert materials available. Consult factory.

All dimensions and weights are approximate. Use certified print for exact dimensions. Design and materials are subject to change without notice.