

Fuse-holders with warning LED circuit

- for Ø 5x20 mm fuses, with LED warning circuit capable of detecting intervention of the fuse
- with LED (CIL) microcircuits - non-polarised for operation under alternating and/or direct current
- available in beige and grey
- maximum continual operating temperature 100°C



CIL... circuit



CIL... circuit

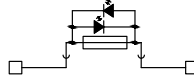
beige version	
grey version	
TECHNICAL CHARACTERISTICS	
function/type	
rated cross-section	(mm ²)
connecting capacity	
flexible	(mm ²)
rigid	(mm ²)
max. flexible with ferrule (mm ²) - ferrule type	
rated voltage / rated current / gauge	conf. to IEC 60947-7-1
rated voltage / rated current / AWG / tightening torque value	UL
(Ex e) rated voltage	(V)
rated impulse withstand voltage / pollution degree	
insulation stripping length	(mm)
tightening torque value (test / max)	(Nm)
height / width / thickness	TH/35 7.5 mm
height / width / thickness	TH/35 15 mm
height / width / thickness	G32

SFR.4/C48 Cat. No. **SF948**
with 48 V non-polarized LED circuit

SFR.4/C230 Cat. No. **SF923**
with 230 V non-polarized LED circuit

SFR.4/C48/GR Cat. No. **SF948GR**
with 48 V non-polarized LED circuit

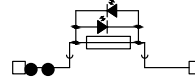
SFR.4/C230/GR Cat. No. **SF923GR**
with 230 V non-polarized LED circuit



For Ø 5 x 20 mm fuse and LED circuit
4

0.2 – 6
0.2 – 6
4 - WP40/16
800 V (*) / 6.3 A max / A4
600 V / 6.3 A / 20-12 AWG / 4.4 lb.in.
-
6 kV (*) / 3
11
0.5 / 1.2
52 / 52 / 8
60 / 52 / 8
56 / 52 / 8

CBF.4/C48/GR Cat. No. CBF448GR with 48 V non-polarized LED circuit	
CBF.4/C23/GR Cat. No. CBF423GR with 230 V non-polarized LED circuit	

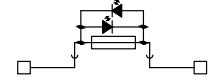


For Ø 5 x 20 mm fuse and LED circuit
4

0.2 – 6
0.2 – 6
4 - WP40/16
630 V (*) / 6.3 A max (20A with CO/5) / A4
600 V / 6.3 A / 20-12 AWG / 4.4 lb.in.
-
6 kV (*) / 3
11
0.5 / 1
76 / 57 / 6
83 / 57 / 6
-

FPL.10/C48 Cat. No. **FP948**
with 48 V non-polarized LED circuit

FPL.10/C230 Cat. No. **SF923**
with 230 V non-polarized LED circuit



For Ø 6.3 x 32 mm fuse and LED circuit
10

1.5 – 16
1.5 – 16
10 - WP100/21
800 V (*) / 10 A / B6
300 V / 15 A / 20-6 AWG / 7 lb.in.
-
6 kV (*) / 3
17
1.2 / 1.9
71 / 63 / 12
79 / 63 / 12
75 / 63 / 12

APPROVALS



ACCESSORIES	
End sections	grey beige
"Easy Bridge" permanent cross connection 2 poles (intrinsically IPXXB protected once mounted)	3 poles
Available also in coloured version Ref. Page 130	5 poles 10 poles 42 poles
Rated current carrying capacity of jumper	(A)
Cross-connection identification strip(100mm)	green
Coloured partition	red
Miniature fuse	Ø 5 x 20 mm
Conducting element	
Marking tag	printed or blank
End bracket	

Type	Cat. No.
SFR/PT/GR	SF701GR
SFR/PT	SF701
-	-
-	-
-	-
-	-
-	-
-	-
-	-
DFU/3	DU03R
F5	FN...
CO/5	VL103
CNU/8/51	NU0851
BTU for PR/DIN and PR/3	BT005
BT/DIN/PO for PR/DIN only	BT001
BT/3-BTO for PR/3 only	BT003-BT007

Type	Cat. No.
CB/PT/GR	CB401GR
-	-
PTC/4/02	PTC0402
PTC/4/03	PTC0403
PTC/4/05	PTC0405
PTC/4/10	PTC0410
PTC/4/00	PTC0400
32	
PTC/SP	PTC0990
-	-
F5	FN...
CO/5	VL103
CNU/8/51	NU0851
BTU for PR/DIN and PR/3	BT005
BT/3-BTO for PR/3 only	BT003-BT007

Type	Cat. No.
-	-
-	-
-	-
-	-
-	-
-	-
-	-
-	-
-	-
DFU/6	DU06R
MSM	FC103
-	-
-	-
BTU for PR/DIN and PR/3	BT005
BT/DIN/PO for PR/DIN only	BT001
BT/3-BTO for PR/3 only	BT003-BT007