

## Cylinder Accessories ▶ Guide units, series CG1

### Guide unit, Series GH2

▶ Ø 32 - 100 mm ▶ Linear ball bearing ▶ For standard cylinders ISO 15552



00105863

Ambient temperature min./max.

-20 °C / 80 °C

Materials:

Bearing type

Steel

Carrying plate

Aluminum, colorless anodized

Flexible coupling in carrying plate

Stainless steel

Guide rods

Steel, hardened

Suitable piston Ø		[mm]	32	40	50	63	80
		Weight	0 mm stroke	[kg]	1.3	2.3	3.7
	10 mm stroke	[kg]	0.009	0.016	0.025	0.025	0.039

Suitable piston Ø		[mm]	100				
		Weight	0 mm stroke	[kg]	11.1		
	10 mm stroke	[kg]	0.039				

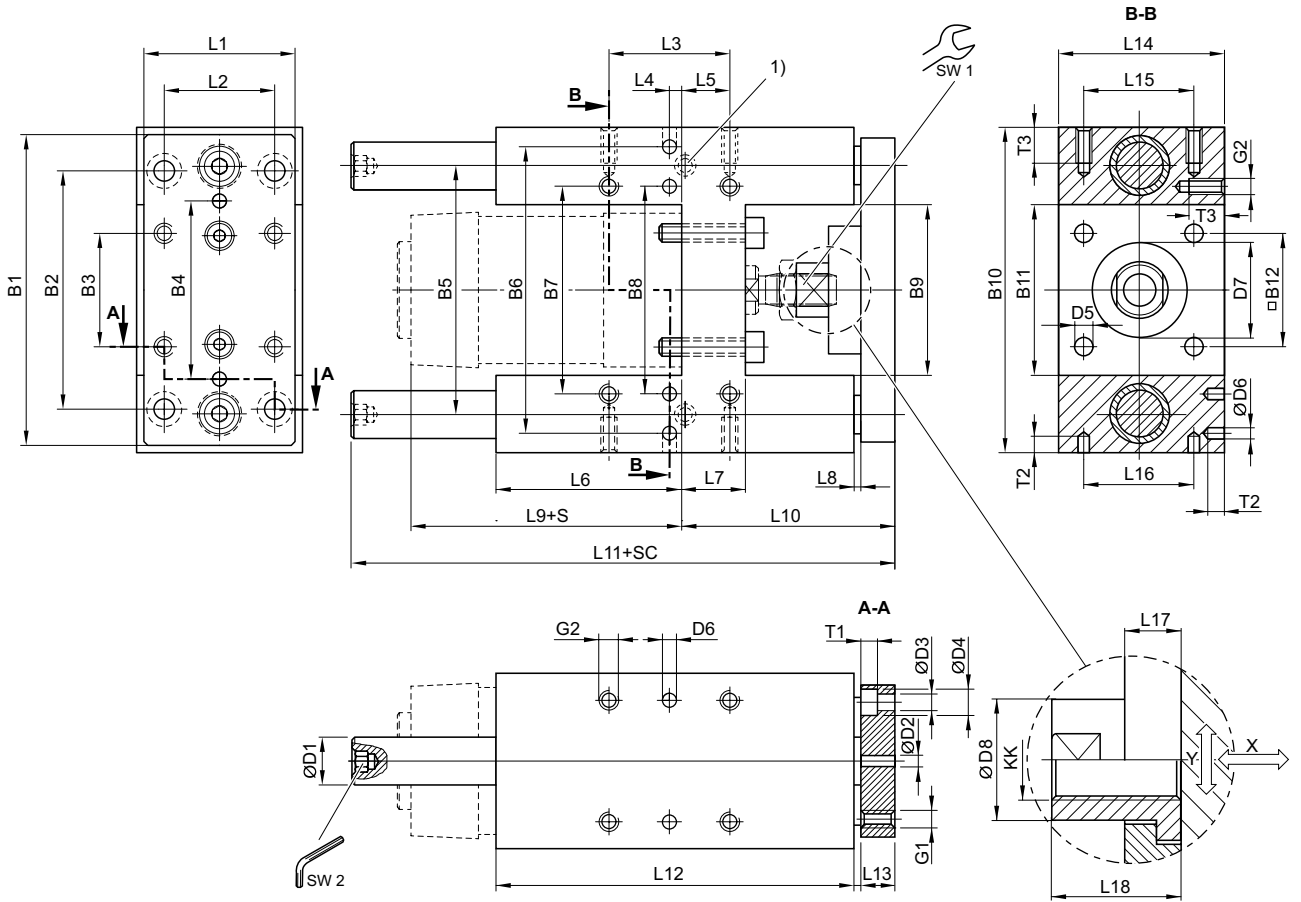
Suitable piston Ø [mm]		32	40	50	63	80
Stroke	50	<b>0821401320</b>	<b>0821401330</b>	<b>0821401340</b>	0821401380	-
	100	<b>0821401321</b>	<b>0821401331</b>	<b>0821401341</b>	0821401381	<b>0821401360</b>
	200	<b>0821401322</b>	<b>0821401332</b>	<b>0821401342</b>	<b>0821401382</b>	0821401361
	320	<b>0821401323</b>	<b>0821401333</b>	<b>0821401343</b>	0821401383	0821401362
	500	<b>0821401324</b>	<b>0821401334</b>	<b>0821401344</b>	0821401384	<b>0821401363</b>
	600	0821401325	0821401335	0821401345	0821401385	0821401364
	800	0821401326	<b>0821401336</b>	0821401346	0821401386	0821401365
	1000	0821401327	<b>0821401337</b>	0821401347	0821401387	0821401366
	1200	0821401328	0821401338	0821401348	0821401388	0821401367
Suitable piston Ø [mm]		100				
Stroke	50	-				
	100	0821401370				
	200	0821401371				
	320	0821401372				
	500	0821401373				
	600	0821401374				
	800	0821401375				
	1000	0821401376				
1200	0821401377					

Inch dimensions rounded to the nearest whole number.  
For use with hybrid inch cylinders with metric piston rod thread

## Guide unit, Series GH2

▶ Ø 32 - 100 mm ▶ Linear ball bearing ▶ For standard cylinders ISO 15552

Ø 32 - 100 mm



00127779

- 1) Lube nipple
- S = stroke
- SC = cylinder stroke
- X = max. play (axial)
- Y = min. play (radial)
- Hexagon in guide rod

[Piston Ø]	B1	B2	B3	B4	B5	B6	B7	B8	B9	B10	B11	B12	D1
32	90	78	32.5	50	74	81	61	61	50.2	97	50.2	32.5	12
40	110	84	38	54	87	99	69	69	58.2	115	58.2	38	16
50	130	100	46.5	72	104	119	85	85	70.2	137	70.2	46.5	20
63	145	105	56.5	82	119	132	100	100	85.2	152	85.2	56.5	20
80	180	130	72	106	148	166	130	130	105.4	189	105.4	72	25
100	200	150	89	131	172	190	150	150	130.4	213	130.4	89	25

[Piston Ø]	D2 H7	D3	D4	D5	D6 H7	D7 M8	D8	G1	G2	KK	L1	L2	L3
32	6	6.6	11	6.6	6	30	14.5	M6	M6	M10x1,25	45	32.5	32.5
40	6	6.6	11	6.6	6	35	18	M6	M6	M12x1,25	54	38	38
50	6	9	15	9	6	40	24	M8	M8	M16x1,5	63	46.5	46.5
63	6	9	15	9	6	45	24	M8	M8	M16x1,5	80	56.5	56.5
80	6	11	18	11	6	45	30	M10	M10	M20x1,5	100	72	72
100	6	11	18	11	6	55	30	M10	M10	M20x1,5	120	89	89

Cylinder Accessories ▶ Guide units, series CG1

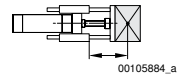
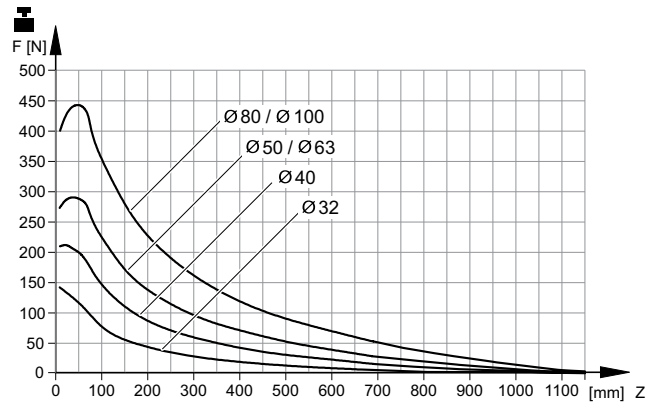
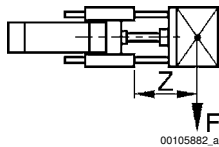
## Guide unit, Series GH2

▶ Ø 32 - 100 mm ▶ Linear ball bearing ▶ For standard cylinders ISO 15552

[Piston Ø]	L4	L5	L6	L7	L8	L9	L10	L11	L12	L13	L14	L15	L16
32	12	4.25	76	17	3	94	64	177.5	125	12	50	32.5	32.5
40	8	11	81	21	3	105	74	192.5	140	12	58	38	38
50	4.5	18.75	79	26	3	106	89	237	150	15	70	46.5	46.5
63	13	15.25	111	26	3	121	89	237	182	15	85	56.5	56.5
80	15	21	128	34	3	128	110	280	215	20	105	72	72
100	20	24.5	128	39	3	138	115	280	220	20	130	89	89

[Piston Ø]	L17	L18	T1	T2	T3	SW1	SW2						
32	6	17	6.5	10	15	13	5						
40	14	22	6.5	10	15	15	6						
50	14	26	9	10	16	22	6						
63	14	26	9	10	16	22	6						
80	14	32	11	10	20	27	8						
100	14	32	11	10	20	27	8						

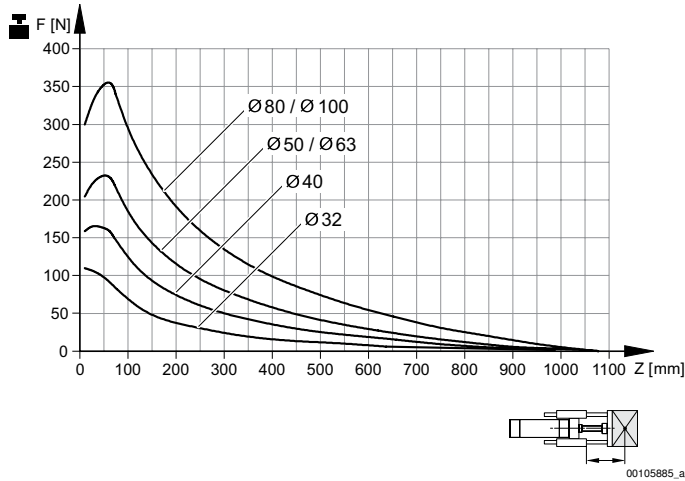
Useful load



Service life  $2 \times 10^6$  m  
 F = Useful load, Z = Projection

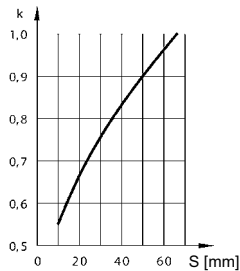
## Guide unit, Series GH2

▶ Ø 32 - 100 mm ▶ Linear ball bearing ▶ For standard cylinders ISO 15552



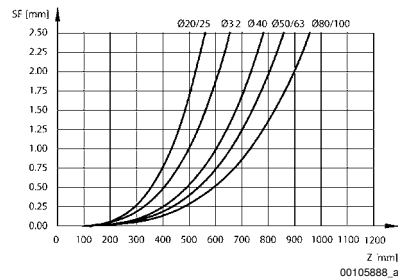
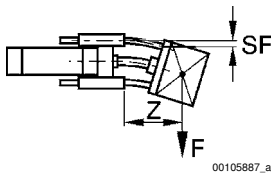
Service life  $5 \times 10^6$  m  
 F = Useful load, Z = Projection

### Reduction of useful load for short-stroke



S = stroke  
 k=correction factor: normal=1; shock loaded=2  
 With a short stroke, the useful load figures determined from the diagram must be multiplied by the correction factor k. These short-stroke adjustments are already included in the load diagram for a displacement of up to 60 mm.

### Bending due to own load



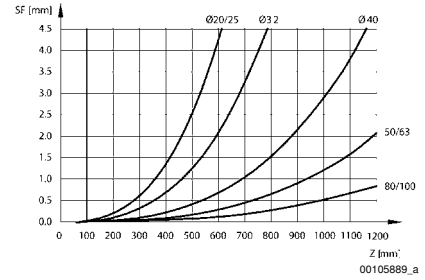
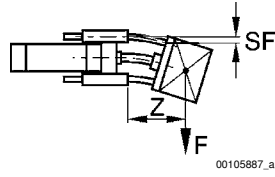
F = useful load (at the load center), SF = bending, Z = projection

Cylinder Accessories ▶ Guide units, series CG1

**Guide unit, Series GH2**

▶ Ø 32 - 100 mm ▶ Linear ball bearing ▶ For standard cylinders ISO 1552

Bending due to 10 N load



F = useful load (at the load center), SF = bending, Z = projection