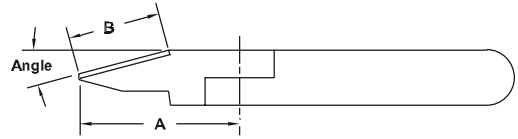


## Kategorie I Standard-Schneideinsätze

### Typ F\*

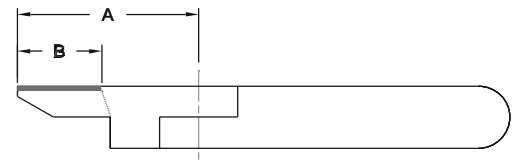
- Für MR, ML, MSR, ASA, CF, MR, MS/MSP, SC, MSF/MSFP, MSK, SMR



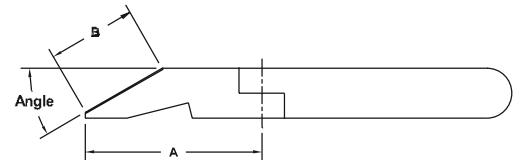
Blade No.	A (Pivot Location)	B (Edge Length)	C (Blade Opening)	Blade Angle	Cutter Body Size	Weight (g)
F10	24	12	2.5	15°	3	~
F1	24	12	3	15°	5	39
F3	27	12	4.5	25°	10	~
F5	35	15	8.5	15°	20	122
F9PF	65	38	15	15°	30/50	397

### Typ F\*S

- Für MR, ML, MSR, ASA, CF, MR, MS/MSP, SC, MSF/MSFP, MSK, SMR



Blade No.	A (Pivot Location)	B (Edge Length)	C (Blade Opening)	Cutter Body Size	Weight (g)
F10S	24	12	2.5	3	33
F1S	24	12	3	5	~
F3S	27	13	4.5	10	69
F5S	35	16	8.5	20	121
F9PSF	65	37	15	30/50	416

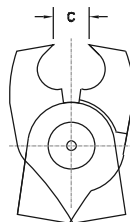
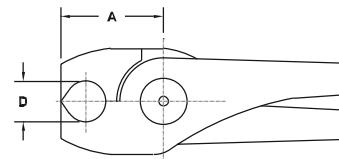
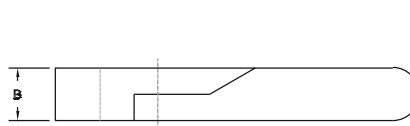


- Für MR, ML, MSR, ASA, CF, MR, MS/MSP, SC, MSF/MSFP, MSK, SMR

Blade No.	A (Pivot Location)	B (Edge Length)	C (Blade Opening)	Blade Angle	Cutter Body Size	Weight (g)
FD10	24	12	2.5	40°	3	~
FD1	24	12	3.0	40°	5	~
FD3	27	13	4.5	40°	10	71
FD5	35	16	8.5	40°	20	123
FD7	27	12	3.4	40°	7	70
FD9PF	65	28	15.0	30°	30/50	415

### Typ FEP\*

- Für MR, ML, MSR, ASA, CF, MR, MS/MSP, SC, MSF/MSFP, MSK, SMR



Blade No.	A (Pivot Location)	B (Edge Length)	C (Blade Opening)	D	Cutter Body Size	Gewicht (g)
FEP20	20	7	2.3	7.5	3	~
FEP2	20	7	3.1	7.5	5	41
FEP4	26	9	5.2	7.5	10	~
FEP6	28	12	8.9	11.5	20	112
FEP7	26	9	3.2	7.5	7	~
FEP10PF	34	17	6	11.5	30	353