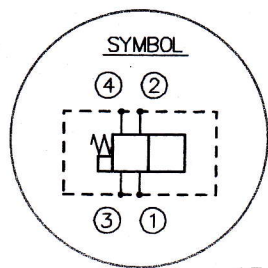
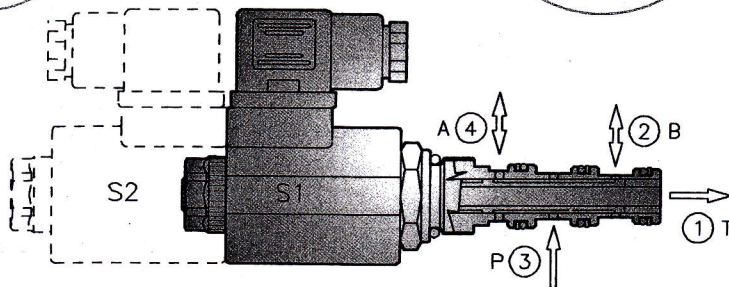
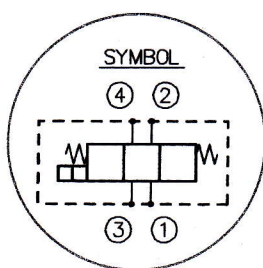


SOLENOID OPERATED DIRECTIONAL VALVES SPOOL TYPE - FOUR WAY - TWO/THREE POSITION



NCS

Type EDH 06



SIZE	06	
NOMINAL PORT SIZE	6	
MAX FLOW RATE	l/min	35
	US gpm	9.2
MAX PRESSURE THROUGH ② ③ ④	bar	315
	psi	4500
CAVITY NUMBER	00.95	064
NORMALIZED CAVITY	NCS	06/4
MAX TIGHTENING TORQUE	Nm	50
WEIGHT INCLUDING COIL	1 SOLENOID	kg 0.450
	2 SOLENOID	kg 0.810
REF CAVITY DIMENSIONS	11.450	

VERSIONS

TYPE	HYDRAULIC SYMBOLS	FUNCTIONS OBTAINED WITH SOLENOID			OVERLAP	MAX. FLOW RATE l/min	MAX. PRESSURE bar
		De-energized	S1 Energized	S2 Energized			
42 05		③ → ② ④ → ①	③ → ④ ② → ①		+	35	315
42 06		④ → ② ③ → ①	③ → ④ ② → ①		+	35	315
42 07		④ ③ → ①	③ → ④ ② → ①		-	25	315
42 08		③ → ① ④ → ②	③ → ④ ② → ①		-	25	315
42 12		③ → ④ ② → ①	④ → ② ③ → ①		+	35	315
42 13		④ → ② ③ → ①	④ ② → ① ③ → ①		+	35	315
42 14		④ → ② ③ → ①	③ → ② ④ → ①		+	35	315
43 06		④ → ② ③ → ①	③ → ④ ② → ①	③ → ② ④ → ①	+	35	315
43 07		④ ③ → ①	③ → ④ ② → ①	③ → ② ④ → ①	-	25	315
43 08		③ → ① ④ → ②	③ → ④ ② → ①	③ → ② ④ → ①	-	25	315
43 09		④ ② → ① ③ → ①	③ → ④ ② → ①	③ → ② ④ → ①	+	35	315
43 10		④ ③ → ① ② → ①	③ → ④ ② → ①	③ → ② ④ → ①	-	20	315
43 13		④ → ② ③ → ①	④ ② → ① ③ → ①	③ → ② ④ → ①	+	35	315
43 15		③ ② → ① ④ → ①	③ → ④ ② → ①	③ → ② ④ → ①	-	20	315
43 17		③ → ④ ②	③ → ④ ② → ①	③ → ② ④ → ①	+	35	315
43 19		③ → ④ ② → ①	③ → ④ ② → ①	③ → ② ④ → ①	+	35	315
43 20		③ → ② ④ → ①	③ → ④ ② → ①	③ → ② ④ → ①	+	35	315