



3-910 Rod Guide FS 23mm



Advantages

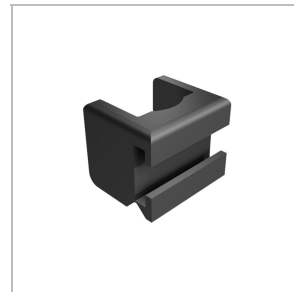
- For flat rods 14x3mm.
- a), b) and c): rod guide with hinge for pre-assembly onto the flat rod.
- b) and c): rod guide for OFFSET-DUO SYSTEM see product system 3-310.
- d) and e): rod guide two halves.

Materials

Rod guide:
a), b) and c): PA, black
d): AISI 316
e): zinc die, black

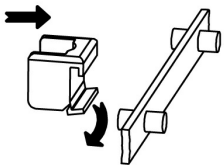
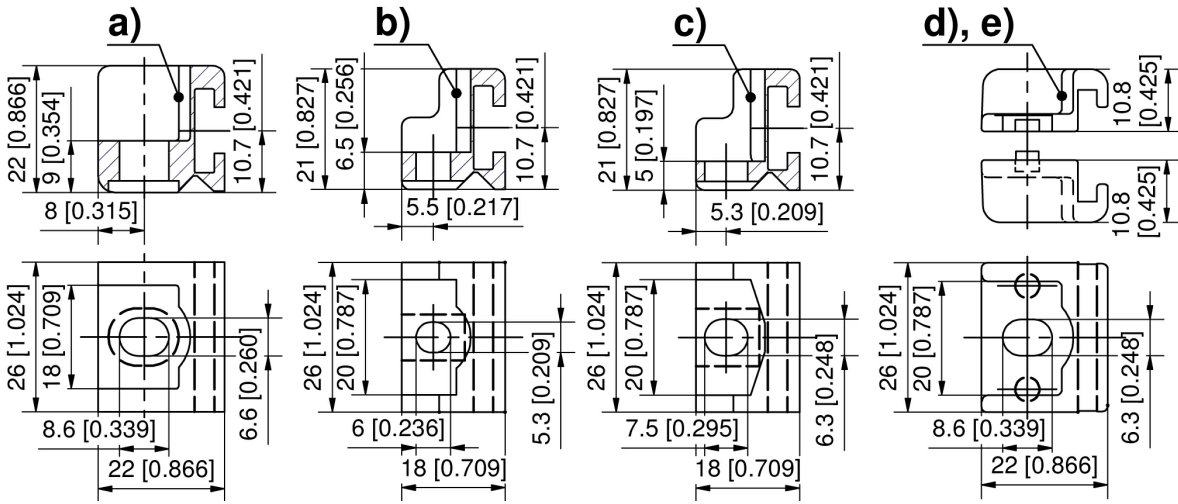
Remarks

Required space inside the bend 23mm

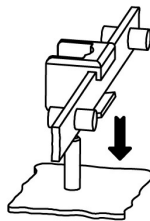


Rod guide

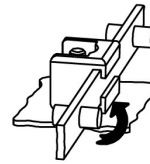
	Part Number	Name	Fastening type	Material	Delivery Unit
a)	208-1501.03-00000	Rod guide PA , 1-part	M6	PA	1 pc.



1. Open the rod guide's living hinge downwards and position over the flat rod.



2. Assemble the flat rod guide onto the weld stud.



3. By tightening the nut the living hinge automatically and securely attaches the flat rod..