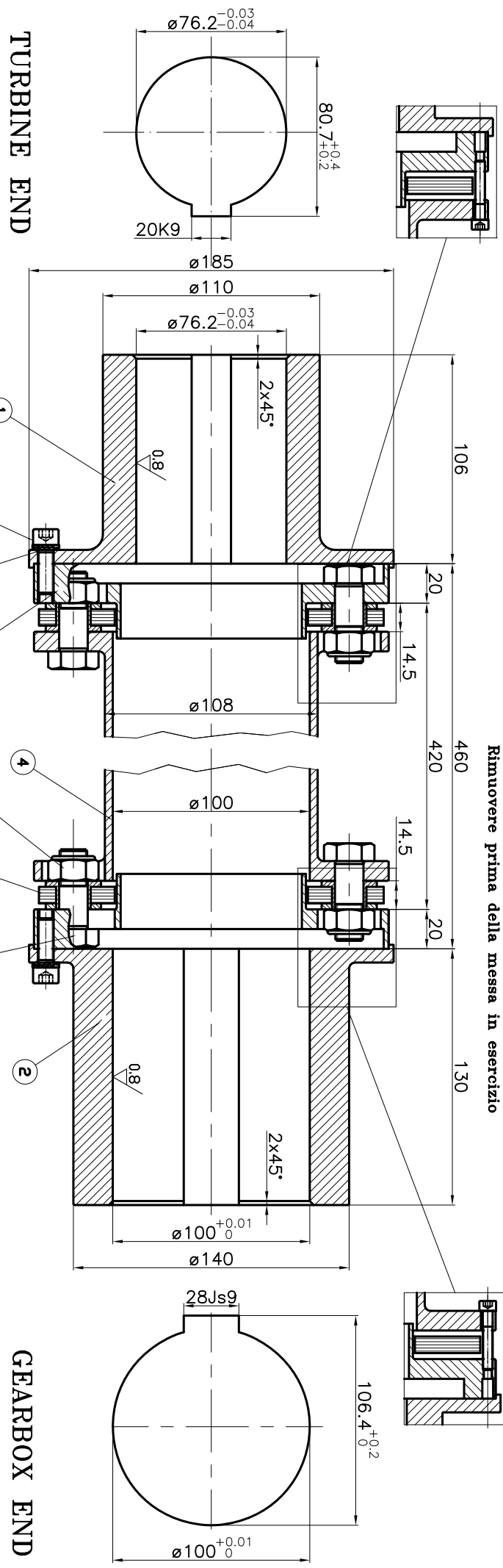


Sistema di compressione pacchi lamellari  
per montaggio e smontaggio gruppo centrale  
Rimuovere prima della messa in esercizio



TURBINE END

GEARBOX END

Requirement:  
X) Power: 1317kW-Speed 4000rpm-Torque:3145Nm(comm.1133-DINO NOBEL ITT)  
Y) Power: 1483KW-Speed 3600rpm-Torque:3934Nm(comm. 1117-JOWA KTI)

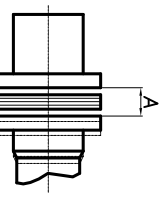
Coupling data:  
COUPLING IN ACCORDING TO API 671

Nominal torque: 8700 Nm  
Overload torque: 13000 Nm  
Short circuit torque: 26000 Nm  
Service factor: X=2.8-Y=2.2  
Max angular misalignment 0°30'  
Max parallel misalignment 3.4mm  
Max axial deflection ±3.0mm  
Weight 26.0Kg  
Inertia MR² 0.1066 Kgm²  
Torsional stiffness (1/3 shaft penetration) 0.55 MNm/rad  
Dynamic balancing API 671 4th edition par.9.2.3-9.3.7  
(Hub without keyway)

CERTIFICATES  
-Certificates materials  
-Chemical analysis and mechanical property  
-Certificates ultrasonic inspection  
-Certificates MT and penetrant test  
-Certificates balancing

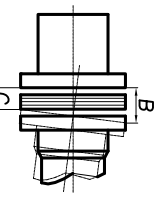
Max misalignment assembly

AXIAL



A=14±0.5

PARALLEL - ANGULAR



(B-C) ≤ 0.5

POS.	CODICE	DESCRIZIONE	Q.tà	MATERIALE
9	19RZ1668702500	NORD LOCK M8	32	COMM.
8	L7TC08250N300	BOLT M8x25 Cl.12.9	32	COMM.
7	17NB14000AS500	NUT M14x1.25 Cl.12	16	COMM.
6	C0D280444-E	BOLT M14x1.25	16	39NICMo3 BON.
5	C0D280444-F	ELIMINANT BLADES HSS 140-8	2	AISI 301+ P880
4	C0D280444-C	SPACER	1	39NICMo3 BON.
3	C0D280444-D	ADAPTOR	2	39NICMo3 BON.
2	C0D280409-B	HUB	1	39NICMo3 BON.
1	C0D280409-A	HUB	1	39NICMo3 BON.

Tolleranze generali per lavorazioni standard	da 0 a 30	da 30 a 100	da 100 a 300	da 300 a 1000	da 1000 a 3000	da 3000 a 10000
±0.1	±0.2	±0.3	±0.5	±0.8	±1.2	±2.0

GIUNTO TIPO: HSS 140/8/AH

DELTA MECHANICA  
Rif. Comm.1117/14-JOWA KTI  
Rif. Comm.1133/14-DINO NOBEL ITT

Il presente disegno e' di proprieta' SAPIT fac" e ne e' vietata la riproduzione anche parziale o l'utilizzo.

Ve. Libera 1990 ROMA MARZO 2010 (M. 1)  
SAPIT fac"  
Tel. 06/2888331 - Fax. 06/2888303

Disegnato: G. DE TOMMASI  
Controllo: G. LANDONI  
Data: 19/06/14  
Disegno N° 250409/1