



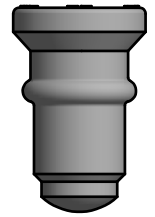


## 10 PC MEMBRANE W9/SIMPLEX SILICONE, GREY


ART. NO. 600051

### GENERAL

-  KEOFITT has the widest selection of spare parts and accessories to complete your sampling system
-  Compatible with all KEOFITT W9 & Simplex valve heads for silicone, EPDM & FFKM membrane
-  The patented membrane design is an essential part of the hygienic design of the KEOFITT sampling valves
-  It allows for optimal exposure to CIP and SIP media while also integrating the capacity to remove the membrane from the valve body without the use of tools



### FEATURES

-  Compatible with all KEOFITT W9 & Simplex valve heads for silicone, EPDM & FFKM membrane

### CERTIFICATION\*

FDA · USP · EU 1935/2004

### TECHNICAL DATA

Type:	Silicone (QBF-65 - grey)
Hardness (°Sha):	70 ±3
Tensile strength (MPa):	Min. 8,5
Elongation at break (%):	550 ±80
Density (g/cm <sup>3</sup> ):	1,19 ±0,01
Range of temperature in dry atmospheric air (°C/°F):	-60° - +200°C / -140° - +392°
Compression set, DIN 53517, 24h/175°C (%):	Max. 25
Wear resistance:	Less suitable
Tear resistance:	Very good
Resistance to Weather and Ozone:	Excellent
Resistance to Hydrolysis (water and steam):	Good
Resistance to Chemicals (acids/bases):	Suitable
Resistance to mineral oil and gas:	Less suitable
Impermeability to air and gasses:	Not suitable

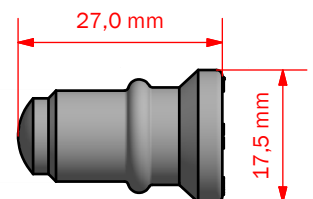
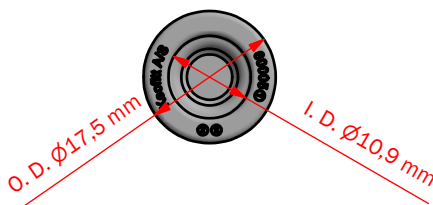
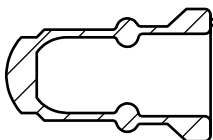
### SERVICE LIFE

Average service life of a Silicone membrane is 2-3 months - actual life expectancy must be experimentally determined by the user.

Temp. max.:	121°C / 250°F
Steam pressure:	0 - 2 bar (g) / 0 - 29 psi (g)
Process pressure:	0 - 6 bar (g) / 0 - 87 psi (g)
CIP:	NaOH or similar
Samples:	1-5 a day

### Net Weight

· Kg/lbs 0,030 kg / 0,06 lbs



# MEMBRANES W9 & SIMPLEX

**Silicone**



600051

**EPDM**



600052

**PTFE**



850055

**Part of valve head**

600041	600041E	855541
600042	600042E	855542
600043	600043E	855543
600044	600044E	855544
600047	600047E	855547
830141	830141EPDM	830141PTFE
830144	830144EPDM	830144PTFE
831141	831141EPDM	831141PTFE
831144	831144EPDM	831144PTFE
832141	832141EPDM	832141PTFE
832144	832144EPDM	832144PTFE
832241	832241EPDM	832241PTFE
832244	832244EPDM	832244PTFE

**Part of spare part kit**

776041	776041EPDM	778541
776044	776044EPDM	778544
778301	778301EPDM	778301PTFE
778344	778344EPDM	778344PTFE