



► Hybrid stepper motors

6600-30

- Step angle..... 1.8°
- Size 57.2 mm
- Weight 950 g
- Holding torque .. 1950/1400 mNm

The hybrid stepper motor comes into its own where torque at low speed, positioning, and accuracy are determining factors.

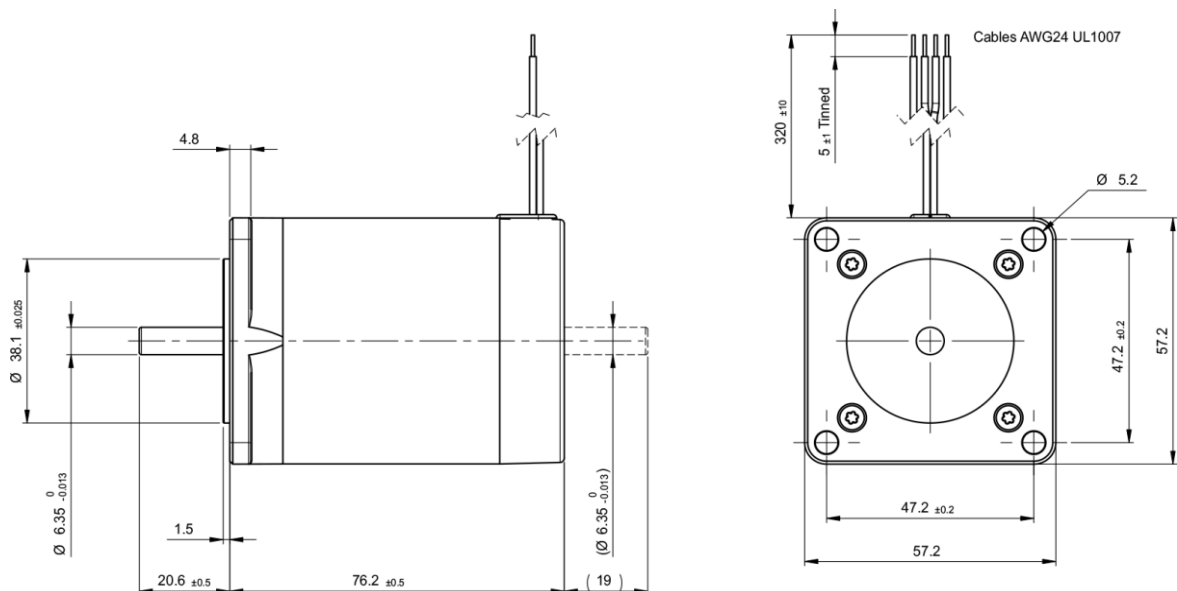
► Technical data

	Part N°	Phase resistance [Ω]	Phase inductance [mH]	Phase current [A]	Holding torque [mNm]	Nominal power [W]
Bipolar	6600-30-2-0.37	0.37	1.5	4.7	1950	16.5
	6600-30-2-2.6	2.6	9	1.8	1950	16.5
Unipolar	6600-20-4-0.37	0.37	0.6	4.7	1400	16.5
	6600-30-4-2.6	2.6	5	1.8	1400	16.5

Steps/rev.	200
Step accuracy	± 5%
Rotor inertia	425 gcm ²
Insulation class	B 130 °C
Protection	DIN 40050 IP 30
Test voltage	500 VAC
Detent torque	70 mNm

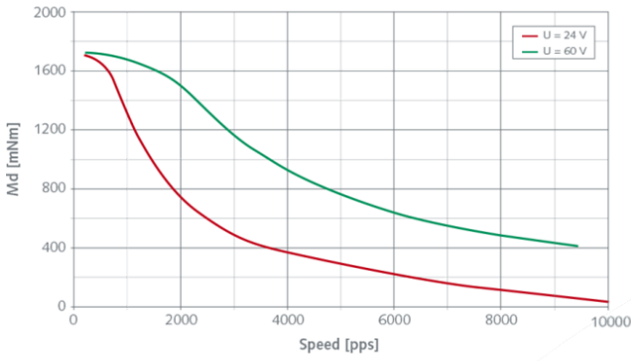
► Dimensions

Drawing not to scale. All dimensions in mm.

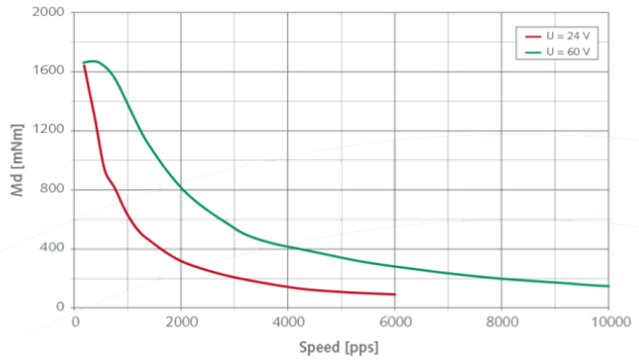


► Dynamic characteristics

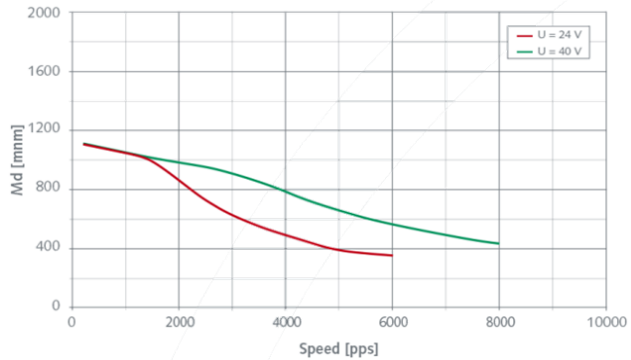
• 6600-30-2-0.37



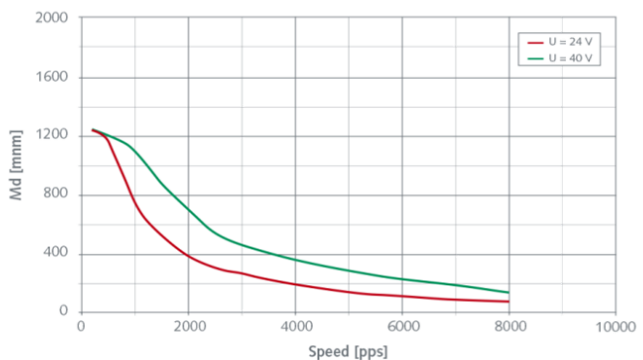
• 6600-30-2-2.6



• 6600-30-4-0.37



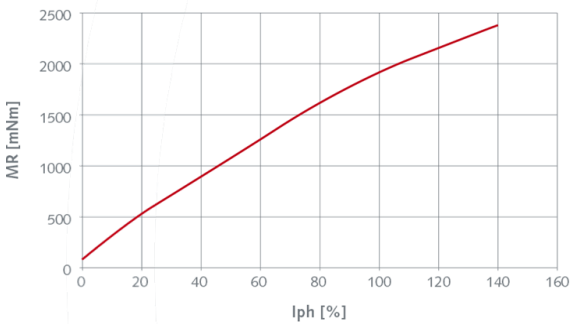
• 6600-30-4-2.6



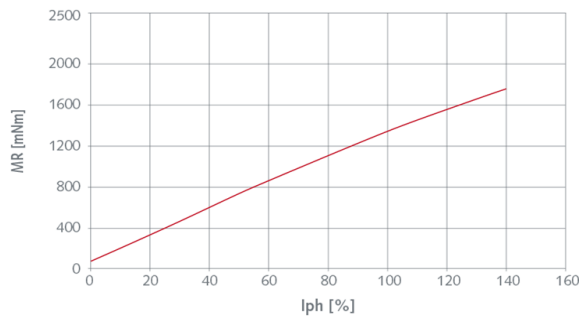
Inns = nulses per second

► Static characteristics

• 6600-30-2 Series

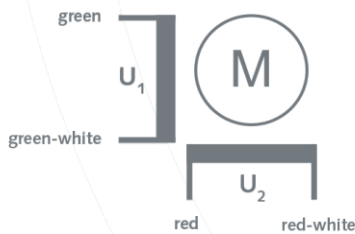


• 6600-30-4 Series

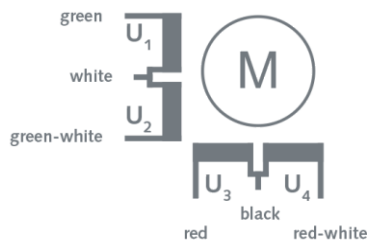


► Electrical Interface

• Bipolar



• Unipolar



Special requirements upon customer specifications. Right to change reserved.

<2.0>

SONCEBOZ SA

2605 Sonceboz – Switzerland

Tel. +41(0) 32 488 11 11

Fax +41(0) 32 488 11 00

info@sonceboz.com - www.sonceboz.com

