

## Directional valves ▶ Electrically operated

### 3/2-directional valve, Series 579

▶ Qn = 520 l/min ▶ NC ▶ pipe connection ▶ Compressed air connection output: Ø6x1 ▶ Electr. connection: Plug, ISO 15217, form C ▶ Can be assembled into blocks ▶ Manual override: with detent ▶ Pilot: internal



P579\_051

Version	Poppet valve
Sealing principle	Soft sealing
Working pressure min./max.	2 bar / 8 bar
Ambient temperature min./max.	-15 °C / +50 °C
Medium temperature min./max.	-15 °C / +50 °C
Medium	Compressed air
Max. particle size	5 µm
Oil content of compressed air	0 mg/m³ - 1 mg/m³
Protection class with connection	IP65
	Protected against polarity reversal
Duty cycle	100 %
Typ. switch-on time	18 ms
Typ. switch-off time	16 ms
Weight	0.093 kg
Materials:	
Housing	Polyamide
Seals	Acrylonitrile butadiene rubber; Polyurethane

#### Technical Remarks

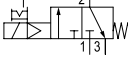

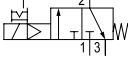

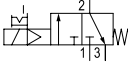

- The min. control pressure must be adhered to, since otherwise faulty switching and valve failure may result!
- The pressure dew point must be at least 15 °C under ambient and medium temperature and may not exceed 3 °C.
- The oil content of compressed air must remain constant during the life cycle.
- Use only the approved oils from AVENTICS, see chapter „Technical information“.
- At an ambient temperature of 40 °C the max. working pressure is 10 bar.
- Versions with voltage of less than 50 V DC do not have a protective ground.

Operational voltage			LED	Voltage tolerance		Power consumption	Switch-on power		Holding power	
DC	AC 50 Hz	AC 60 Hz		DC	AC 60 Hz		DC	AC 50 Hz	AC 60 Hz	AC 50 Hz
						W	VA	VA	VA	VA
12 V	-	-	-	-10% / +10%	-	1.6	-	-	-	-
24 V	-	-	-	-10% / +10%	-	1.6	-	-	-	-
24 V	-	-	Red	-10% / +10%	-	1.7	-	-	-	-
-	24 V	24 V	-	-	-10% / +15%	-	3	2.6	2.2	1.8
-	110 V	110 V	-	-	-10% / +15%	-	4.2	3.4	3	2.4
-	230 V	230 V	-	-	-10% / +15%	-	3.2	2.8	2.3	2
-	230 V	230 V	Red	-	-10% / +15%	-	3.4	3	2.5	2.2

## Directional valves ► Electrically operated

## 3/2-directional valve, Series 579

► Qn = 520 l/min ► NC ► pipe connection ► Compressed air connection output: Ø6x1 ► Electr. connection: Plug, ISO 15217, form C ► Can be assembled into blocks ► Manual override: with detent ► Pilot: internal

	MO	Type	Compressed air connection		Operational voltage			Power consumption	Hold-ing power	Hold-ing power	Part No.	
			Input	Output	DC	AC 50 Hz	AC 60 Hz	DC	AC 50 Hz	AC 60 Hz		
												[W]
	NC		Inlet valve	Ø 8x1	Ø 6x1	12 V	-	-	1.6	-	-	<b>5790500210</b>
			Inlet valve	Ø 8x1	Ø 6x1	24 V	-	-	1.6	-	-	<b>5790500220</b>
			Inlet valve	Ø 8x1	Ø 6x1	24 V	-	-	1.7	-	-	<b>5790500620</b>
			Inlet valve	Ø 8x1	Ø 6x1	-	24 V	24 V	-	2.2	1.8	<b>5790505220</b>
			Inlet valve	Ø 8x1	Ø 6x1	-	110 V	110 V	-	3	2.4	5790505270
			Inlet valve	Ø 8x1	Ø 6x1	-	230 V	230 V	-	2.3	2	<b>5790505280</b>
			Inlet valve	Ø 8x1	Ø 6x1	-	230 V	230 V	-	2.5	2.2	5790505680
			Stacking valve	-	Ø 6x1	12 V	-	-	1.6	-	-	<b>5791500210</b>
			Stacking valve	-	Ø 6x1	24 V	-	-	1.6	-	-	<b>5791500220</b>
			Stacking valve	-	Ø 6x1	24 V	-	-	1.7	-	-	<b>5791500620</b>
			Stacking valve	-	Ø 6x1	-	24 V	24 V	-	2.2	1.8	5791505220
			Stacking valve	-	Ø 6x1	-	110 V	110 V	-	3	2.4	5791505270
			Stacking valve	-	Ø 6x1	-	230 V	230 V	-	2.3	2	<b>5791505280</b>
			Stacking valve	-	Ø 6x1	-	230 V	230 V	-	2.5	2.2	5791505680
	NC		Stacking valve, add. compressed air port	Ø 6x1	Ø 6x1	12 V	-	-	1.6	-	-	5796400210
			Stacking valve, add. compressed air port	Ø 6x1	Ø 6x1	24 V	-	-	1.6	-	-	5796400220
			Stacking valve, add. compressed air port	Ø 6x1	Ø 6x1	24 V	-	-	1.7	-	-	5796400620
			Stacking valve, add. compressed air port	Ø 6x1	Ø 6x1	-	24 V	24 V	-	2.2	1.8	5796405220
			Stacking valve, add. compressed air port	Ø 6x1	Ø 6x1	-	110 V	110 V	-	3	2.4	5796405270
			Stacking valve, add. compressed air port	Ø 6x1	Ø 6x1	-	230 V	230 V	-	2.3	2	5796405280
			Stacking valve, add. compressed air port	Ø 6x1	Ø 6x1	-	230 V	230 V	-	2.5	2.2	5796405680
			Stacking valve, add. compressed air port	Ø 8x1	Ø 6x1	12 V	-	-	1.6	-	-	5796500210
			Stacking valve, add. compressed air port	Ø 8x1	Ø 6x1	24 V	-	-	1.6	-	-	5796500220
			Stacking valve, add. compressed air port	Ø 8x1	Ø 6x1	24 V	-	-	1.7	-	-	<b>5796500620</b>
			Stacking valve, add. compressed air port	Ø 8x1	Ø 6x1	-	24 V	24 V	-	2.2	1.8	5796505220
			Stacking valve, add. compressed air port	Ø 8x1	Ø 6x1	-	110 V	110 V	-	3	2.4	5796505270
			Stacking valve, add. compressed air port	Ø 8x1	Ø 6x1	-	230 V	230 V	-	2.3	2	5796505280
			Stacking valve, add. compressed air port	Ø 8x1	Ø 6x1	-	230 V	230 V	-	2.5	2.2	5796505680
	NC		End valve	-	Ø 6x1	12 V	-	-	1.6	-	-	<b>5792500210</b>
			End valve	-	Ø 6x1	24 V	-	-	1.6	-	-	<b>5792500220</b>
			End valve	-	Ø 6x1	24 V	-	-	1.7	-	-	<b>5792500620</b>
			End valve	-	Ø 6x1	-	24 V	24 V	-	2.2	1.8	<b>5792505220</b>
			End valve	-	Ø 6x1	-	110 V	110 V	-	3	2.4	5792505270
			End valve	-	Ø 6x1	-	230 V	230 V	-	2.3	2	<b>5792505280</b>
			End valve	-	Ø 6x1	-	230 V	230 V	-	2.5	2.2	5792505680

**Directional valves ▶ Electrically operated**
**3/2-directional valve, Series 579**

▶ Qn = 520 l/min ▶ NC ▶ pipe connection ▶ Compressed air connection output: Ø6x1 ▶ Electr. connection: Plug, ISO 15217, form C ▶ Can be assembled into blocks ▶ Manual override: with detent ▶ Pilot: internal

Part No.	Switch-on power		Qn	LED	Note
	AC 50 Hz	AC 60 Hz			
	[VA]	[VA]			
<b>5790500210</b>	-	-	520	-	-
<b>5790500220</b>	-	-		-	-
<b>5790500620</b>	-	-		Red	1)
<b>5790505220</b>	3	2.6		-	-
5790505270	4.2	3.4		-	-
<b>5790505280</b>	3.2	2.8		-	-
5790505680	3.4	3		Red	-
<b>5791500210</b>	-	-		-	-
<b>5791500220</b>	-	-		-	-
<b>5791500620</b>	-	-		Red	1)
5791505220	3	2.6		-	-
5791505270	4.2	3.4		-	-
<b>5791505280</b>	3.2	2.8		-	-
5791505680	3.4	3		Red	-
5796400210	-	-		-	-
5796400220	-	-		-	-
5796400620	-	-		Red	1)
5796405220	3	2.6		-	-
5796405270	4.2	3.4	-	-	
5796405280	3.2	2.8	-	-	
5796405680	3.4	3	Red	-	
5796500210	-	-	-	-	
5796500220	-	-	-	-	
<b>5796500620</b>	-	-	Red	1)	
5796505220	3	2.6	-	-	
5796505270	4.2	3.4	-	-	
5796505280	3.2	2.8	-	-	
5796505680	3.4	3	Red	-	
<b>5792500210</b>	-	-	520	-	-
<b>5792500220</b>	-	-		-	-
<b>5792500620</b>	-	-		Red	1)
<b>5792505220</b>	3	2.6		-	-
5792505270	4.2	3.4		-	-
<b>5792505280</b>	3.2	2.8		-	-
5792505680	3.4	3		Red	-

MO = Manual override

1) With LED and protective diode for reducing voltage peaks in the solenoid coil, protected against polarity reversal

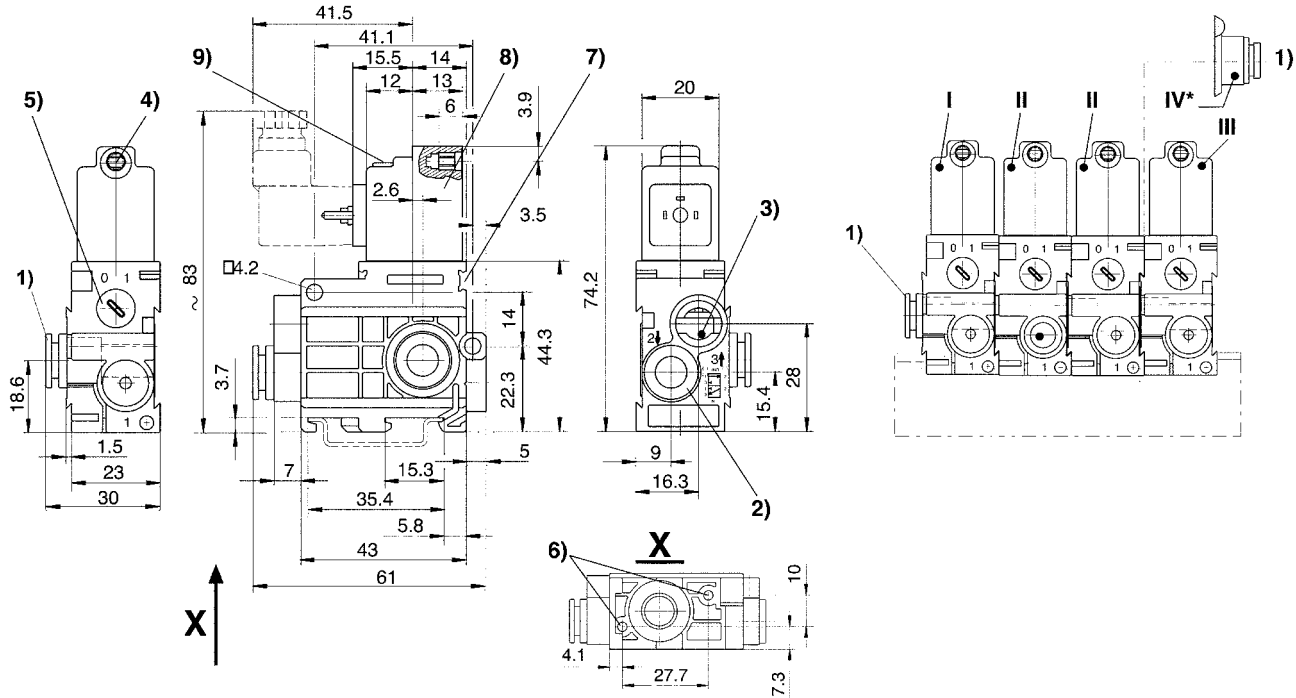
Nominal flow Qn at 6 bar and  $\Delta p = 1$  bar

## Directional valves ▶ Electrically operated

### 3/2-directional valve, Series 579

▶  $Q_n = 520 \text{ l/min}$  ▶ NC ▶ pipe connection ▶ Compressed air connection output:  $\text{Ø}6 \times 1$  ▶ Electr. connection: Plug, ISO 15217, form C ▶ Can be assembled into blocks ▶ Manual override: with detent ▶ Pilot: internal

#### Dimensions



D579\_051

- 1) Port 1
- 2) Port 2
- 3) Port 3, exhaust air must not be throttled
- 4) Core  $\text{Ø}$  for M5
- 5) Manual override
- 6) Pocket hole 6 mm deep for 3.5 self-tapping screw
- 7) Mounting space for name plate
- 8) Coil can be rotated at  $180^\circ$  intervals
- 9) LED

\* Air conn. module (item IV) mounted onto stacking valve (item II) permits additional air supply from right hand side. End valve (item III) not required.  
I = Inlet valve, II = Stacking valve, III = End valve