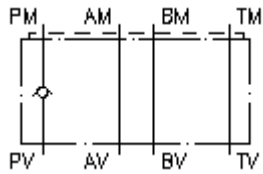
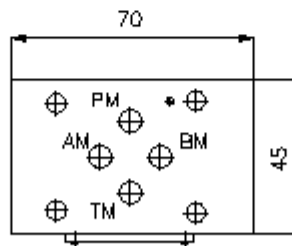
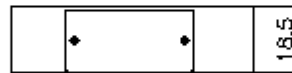
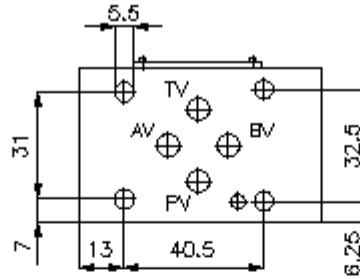


**check valve plate CETOP 3
(sandwich plate) in P
RZ-06S-P**



IMAV-Hydraulik GmbH
Breite Strasse 10
40670 Meerbusch - Germany
fon +49 (0)2159 - 9188.0
fax +49 (0)2159 - 4242
e-mail: info@imav.com
internet: <http://www.imav.com>

IZ-110-200-00
(Subject to change!)



**check valve plate CETOP 3
(sandwich plate) in P
RZ-06S-P**



IMAV-Hydraulik GmbH
Breite Strasse 10
40670 Meerbusch - Germany
fon +49 (0)2159 - 9188.0
fax +49 (0)2159 - 4242
e-mail: info@imav.com
internet: <http://www.imav.com>

IZ-110-200-00

(Subject to change!)

Ordering example:

RZ - 06S - P
| | |
A **B** **C**

Model code:

A **design**
check valve plate
with mounting interface DIN 24340 form A
sandwichplate design

B **size and material**
06S = steel (9SMnPb28K resp. GGG-40)

C **function mode**
P = check valve in the "P" channel

Technical Data:

nominal pressure: 350 bar
nominal flow: 30 l/min
weight: 0.5 kg
crack pressure: 0.2 - 0.3 bar (standard), higher pressure on request
free flow direction: see symbol
included: DT-06 = sealing plate with vulcanized O-ring (Viton FPM)