

Betriebsanleitung
Wasser-Ölfalle WT 20.82 E



Ausgabe V9
DMS-Duales Membranen System

Manual
Condensate-Oiltrap WT 20.82 E



Version V9
DMS-Dual Membran System

Maintenance:

- Exchange of diaphragm at the latest after 6 months
- Both membranes (white and grey) has to be changed.
- Used diaphragms do not reuse.
- Don't treat the new membranes with sharp tools (f. e. screwdriver, tweezers). We recommend cleaned hands.
- O-rings and supporting filter have to be checked during the exchange of the membrane. If necessary replace them.

Storage of the diaphragms:

The diaphragms are to be stored dust free and not over room temperature. Solar radiation, effect of solvents and chemicals are to be avoided.

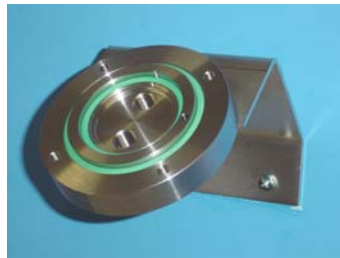
Exchange of the membrane in pictures: the insert sequence is important for the function!

1. Release all 4 screws on the cover.
Open the housing.

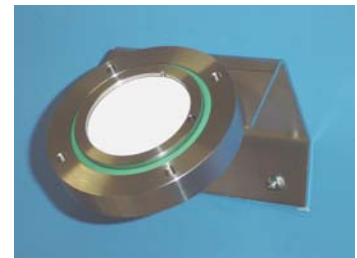


Slot for screwdriver

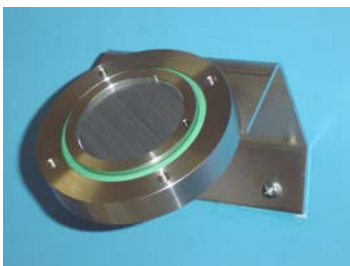
2. Eliminate the membranes.
Bodys without membranes.



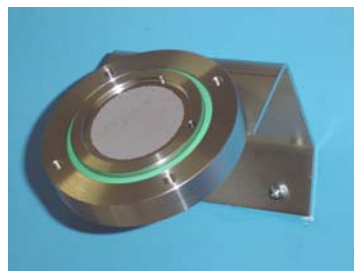
3. Insert the white membrane (bidirectional).



4. Insert the grey membrane (bidirektional).



5. Insert the support sieve (bidirectional).



5. Lock the cover.
Tighten the screws (18 N).



Notice the installaton date for the next maintenance request.

Spare parts:

	Artikelno.	Exchange rate in month
Condensate/oiltrap WT 20.82 E	WT 20.82 E	
Spare membranes (grey and white membranes)*	MEM 20.82	6
Set O-rings FKM Viton (standard) colour green	OR 20.82 FKM	12
Set O-rings PTFE colour white	OR 20.82 PTFE	12*
Set O-rings EPDM colour black shine	OR 20.82 EPDM	12
Set O-Rings FFKM 505 colour black matt	OR 20.82 FFKM	12
Support sieve	STUESI 20.82	24

* Only in a set available

** PTFE O-Ring for single use

Technical data:

Max. water pressure membrane:	2.0 bar with DMS (Dual Membrane System)
Max. oil pressure (10W40) membrane:	0.3 bar
Max. internal pressure housing:	50 bar
Max. gas flow rate membrane:	120 l/h
Pressure loss at 60 l air/h: approx.	50 mbar
Pressure loss at 100 l air /h: approx.	100 mbar
Membrane pore size:	<0.1µm
Maximum operating temperature:	-20 °C/190°C (with FKM Viton O-rings)
Maximum operating temperature:	-50 °C/190°C (with PTFE O-rings)
Effective filter surface: approx.	25 cm ²
Materials used: Stainless steel type:	1.4401, 1.4571, FKM (Viton), SUN-C-coating
Volume:	50 ml
Dimensions:	Diameter 10 cm, height 6 cm
Gas connection:	¼" NPT internal thread (gas input, bypass), 1/8" NPT internal thread (gas output)
Assembly:	Wall-mounted with an angle bracket
Scope of deliverables:	Housing cpl. with membrane and back-up plate, mounting angle

DMS (dual membrane system):

With the DMS two membranes were combine together Membrane 1 increases the water break through pressure up to 2 bar, membrane 2 stops acids, lye and oil.

Example applications for the condensate trap model 20.82 E

Flue gas analysis with bypass and DMS:

