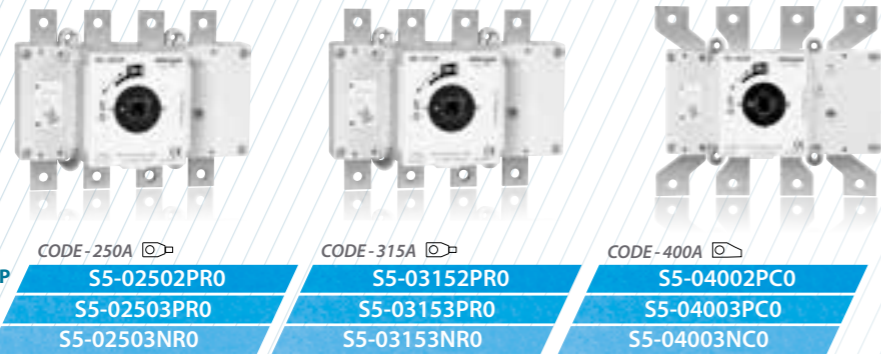
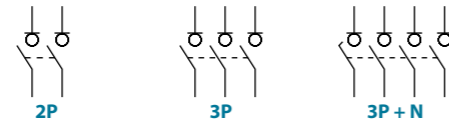


S5000 AC Switch - disconnecter base mounting 2P - 3P - 3P+N

Size 1
A 250|315|400



	CODE-250A	CODE-315A	CODE-400A
2P	S5-02502PRO	S5-03152PRO	S5-04002PCO
3P	S5-02503PRO	S5-03153PRO	S5-04003PCO
3P+N	S5-02503NR0	S5-03153NR0	S5-04003NC0



Technical information

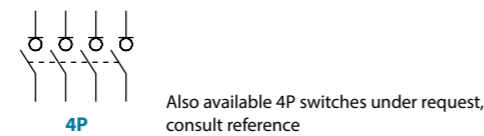
According to IEC/EN 60947-3



tests:
AIT AUSTRIAN INSTITUTE OF TECHNOLOGY
TOMORROW TODAY

			250	315	400
Rated thermal current in ambient at	Ith	40 °C	A 250	315	400
		50 °C	A 250	315	400
		60 °C	A 250	315	320
Rated insulation voltage	Ui	V	1000	1000	1000
Rated dielectric strength	50 Hz., 1 min.	V	5000	5000	5000
Rated impulse withstand voltage	Uimp	kV	8	8	8
AC rated operational current ⁽¹⁾	Ie	Ue 400V AC21A	A 250	315	400
		Ue 400V AC22A	A 250	315	400
		Ue 400V AC23A	A 250	315	400
		Ue 500V AC21A	A 250	315	400
		Ue 500V AC22A	A 250	315	400
(Rated operational frequency 50/60 Hz)		Ue 500V AC23A	A 200	250	315
AC rated operational power ⁽²⁾	Pe	3x400V AC23A	kW 138,5	174,5	221,7
Rated capacitor power	400V, sen φ = 0,65	kVar	112,5	141,8	180,1
Rated breaking capacity	400V AC23A	A	2000	2520	3200
Rated making capacity	400V AC23A	A	2500	3150	4000

			250	315	400
Short - circuit behaviour					
Rated short-circuit making capacity ⁽³⁾	Icm	kA (peak)	20	20	20
Rated short-time withstand current (1sec.)	Icw	kA rms	12	12	12
Conditional short - circuit current (rms value) ⁽⁴⁾	Ika	kA rms	100	100	100
Maximum cut - off current (peak value)		kA (peak)	33	33	33
Maximum power dissipation (I ² t)		A ² s (x10 ³)	1000	1000	1000
Mechanical features					
Minimum number of mechanical operations ⁽⁵⁾	Cycles		20000	20000	20000
Maximum weight 3P		Kg	1,7	1,7	1,9
Maximum weight 3P+N		Kg	1,9	1,9	2,1



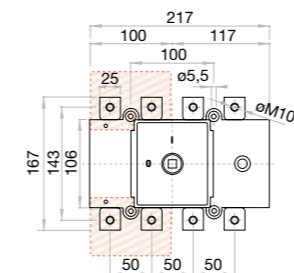
Accessories

- Direct handle**
CODE DS-SI11
- External handle** included shaft ^(e1)
IP65|UL50E/NEMA 250
Types: 1, 3R, 4, 4X y 12
CODE DS-SA11
- External handle** without shaft
IP65|UL50E/NEMA 250
Types: 1, 3R, 4, 4X y 12
CODE DS-SA14
- Emergency external handle** included shaft ^(e1)
IP65|UL50E/NEMA 250
Types: 1, 3R, 4, 4X y 12
CODE DS-SR11
- Terminal protection**
CODE DS-CU12
(1 unit for input or output)
- Terminal shrouds**
CODE DS-CU11
(1 kit for input or output)
- Auxiliary contacts**
1NO+1NC CODE D5LAU01
2NO+2NC CODE D5LAU02
Ie = 16 A (resistive loads)
4 A (inductive loads) at 250 Vac.
- Safety key lock device**
Simple CODE DS-CA11
Double CODE DS-CE11

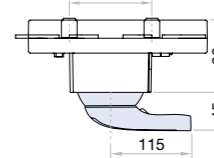
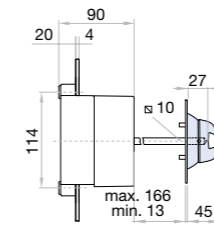
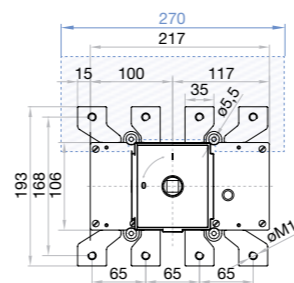
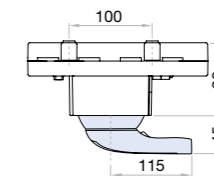
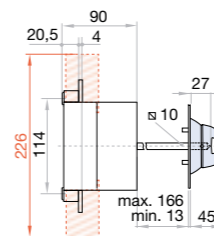
Shafts

Standard shaft included ^(e1)		
L (mm)	P (mm)	
227	103... 256	
Shaft extensions		
Type 1		
L (mm)	P (mm)	CODE
375	103... 415	DS-EP14
Type 2		
L (mm)	P (mm)	CODE
536	103... 576	DS-EP15

Dimensions (mm)



Door drilling for external handle



	S max (Cu) mm ²	H max (Cu) mm	L max (Cu) mm	T	M
250A	185	7	25	M10	18
315A					

	S max (Cu) mm ²	Z max	H max (Cu) mm	L max (Cu) mm	T	M
400A	240	44	7	40	M10	24

